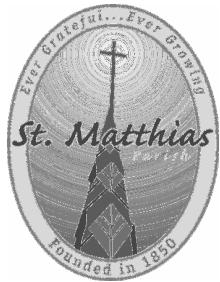


You have not chosen Me, but I have chosen you, and ordained you, that you should go and bring forth fruit, and that your fruit should remain; that whatsoever you shall ask of the Father in My name, He may give it you.

John 15:16

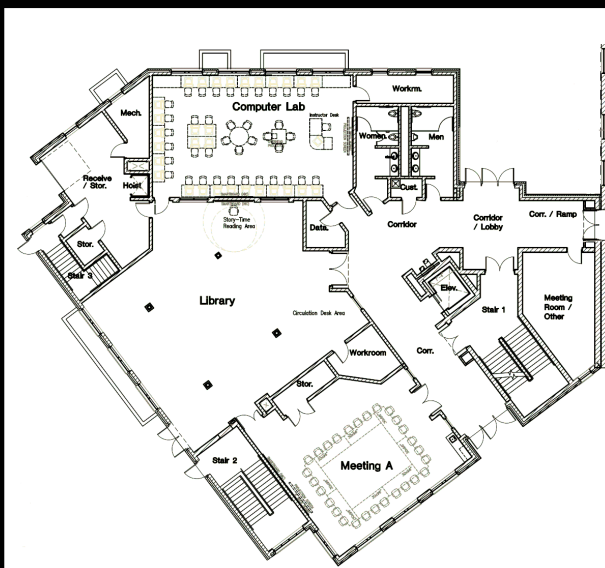


St. Matthias Parish
 9306 West Beloit Road
 Milwaukee, WI 53227
 Phone: 414-321-0893
 Fax: 414-321-1330
 www.stmatthias-milw.org

St. Matthias Parish Enrichment Center



About the Parish Enrichment Center



St. Matthias Parish community has come together to raise funds to expand our campus. The addition, which will be built in the courtyard area between the gym and parish center, will become a hub of technology for our community to use, enjoy and enrich their lives. This addition will include a computer lab, library, and meeting center. It will also have enormous growth potential as the basement of the building will be prepared as to allow for the creation of a cafeteria and additional meeting space in the future.

Order Form

I would like to support the new parish building by purchasing/sponsoring the following:

- Bricks:
- 4X8-14 characters/3 lines.....\$100
 - 8X16-28 characters/6 lines.....\$150
 - 16X16-28 characters/12 lines.....\$250

- Tiles:
- 4X8-14 characters/3 lines.....\$100
 - 8X8-14 characters/6 lines.....\$175
 - 12X12-21 characters/9 lines.....\$225

Total items: _____ Total Cost: \$ _____

Engraving: Please remain within the character count allotted for each size: What are you engraving? Brick Tile

Line 1: _____

Line 2: _____

Line 3: _____

Line 4: _____

Line 5: _____

Line 6: _____

Line 7: _____

Line 8: _____

Line 9: _____

Line 10: _____

Line 11: _____

Line 12: _____

Name: _____

Address: _____

City: _____ State: _____ Zip: _____

Phone: _____ Email: _____

Your support can make all the difference!

The St. Matthias Enrichment center will include three main rooms; a media center where the computer labs and other technology components will be housed, a library which will include materials for both adults and children and will be available for meeting space and group activities, and a large gathering space for various meetings and group interactions, and it will also serve as a chapel space for our Deaf Ministry.

Currently, the building does not have furnishings to make our new addition complete. If you are interested in assisting us in furnishing the new building by sponsoring one of the new rooms, please indicate your sponsorship level below:

- Platinum Level.....\$5,000
 Gold Level.....\$2,500
 Silver Level.....\$1,000
 Bronze Level.....\$500

I would like to sponsor the following room: Please circle

-Media Center -Library -Meeting Room/Chapel

Sponsors of the various levels will be recognized on a plaque located in the room of their choice. Please indicate below how you would like your tag inscribed (each line may be no longer than 28 characters):

Line One: _____

Line Two: _____

Granite Bench: We will providing a limited amount of benches for sale. If you are interested in sponsoring one of the benches, please contact Kari Krause to place your order.

Name: _____

Address: _____

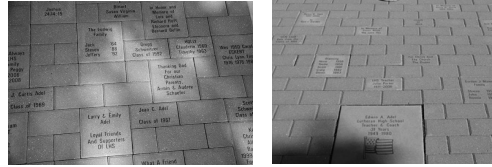
City: _____ State: _____ Zip: _____

Phone: _____ Email: _____

St. Matthias Parish Enrichment Center: What Legacy Will You Leave?

Sponsorship Opportunities

Bricks:



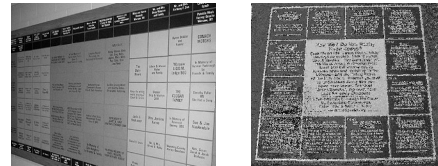
There are three different size options to show your support of the new building by purchasing bricks that will be placed in a patio in front of the building. The sizes and prices are as follows:

4X8-14 characters/3 lines.....\$100

8X16-28 characters/6 lines.....\$150

16X16-28 characters/12 lines.....\$250

Ceramic Tiles:



There are also three different size options to show your support of the new building by purchasing ceramic tiles.

The tiles will be placed on the wall in the new building's corridor for all to see! The sizes and prices are as follows:

4X8-14 characters/3 lines.....\$100

8X8-14 characters/6 lines.....\$175

12X12-21characters/9 lines.....\$225

Other Sponsorship Opportunities:

There will be three rooms in the new building; the media center, the library and the large meeting space/chapel. These rooms will need to be furnished with furniture, equipment, and other necessities. You can help make these rooms truly come to life by becoming a sponsor of the room of your choosing. For example, if you want to support the technology of our community, you would become a sponsor of the media center at the level of your choice. As a sponsor, you will be recognized with an engraved tag with your name on it indicating your level of sponsorship. The tag will be added to a plaque that will be located in the room you sponsor.

The following sponsorship levels are available.

Platinum Level.....\$5,000

Gold Level.....\$2,500

Silver Level.....\$1,000

Bronze Level.....\$500

Granite Benches:



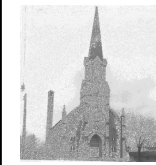
Granite benches are also available as a sponsor opportunity. The benches will be placed near the brick patio to create a warm and inviting seating area outside the Enrichment Center. Quantities are limited.

Granite Bench\$3,500

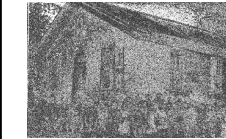
Naming Rights:

We are also offering the opportunity for naming rights for the Enrichment Center. If you are interested in sponsoring and naming one of the rooms, or the whole building, please contact Kari Krause at 414-321-0893 or kkrause@stmatthias-milw.org.

Our History; A Legacy of Community



St. Matthias Parish had its beginnings in about 1845 when the Catholic community in this area was known as Holy Cross. These German Catholics were first served by itinerant priests and then by Fr. Mathias Steiger who traveled ten miles from St. Francis to minister to the people. In 1850 Bishop John Martin Henni announced the formal establishment of the parish and appointed Fr. J.A. Stein as pastor. The parish was then called *St. Matthias*. Although no records indicate the reason for the change in the congregation's name, it is believed to be named St. Matthias in tribute to Fr. Steiger. Fr. Stein chose a site on



the Beloit Road known locally as Whiskey Corners on which to establish the church. Three farming families donated an acre each for the new parish.

Even from the beginnings of the parish, a school was established, first meeting in the barn of one parishioner and the home of another. Shortly after the first church's dedication, arrangements were made to move the school to a different building. Lay teachers were first responsible for the school. It was served by the Sisters of St. Francis of Assisi from 1891-1905. The School Sisters of St. Francis have taught in our school since 1905.

Today we are a parish of approximately 6,400 individuals from almost 2,000 households. Approximately 500 children attend the parish school and 325 children attend our religious education programs.

We are a community that is truly "Ever Grateful, Ever Growing", thankful for the many blessings of the past 160 years.



Support of the new building expands so much farther than monetary needs. We ask for your prayers for the St. Matthias community to guide us as we grow in community. You can also support our building project by showing that support with others. Talk about the wonderful things we are doing at St. Matthias and encourage them to join you in prayer or to take advantage of a sponsorship opportunity. Finally, if you or someone you know is interested in lending their support in a different way or if your place of business can assist us, please contact Kari Krause, Director of Development, at 414-321-0893 Ext. *818 or kkrause@stmatthias-milw.org.